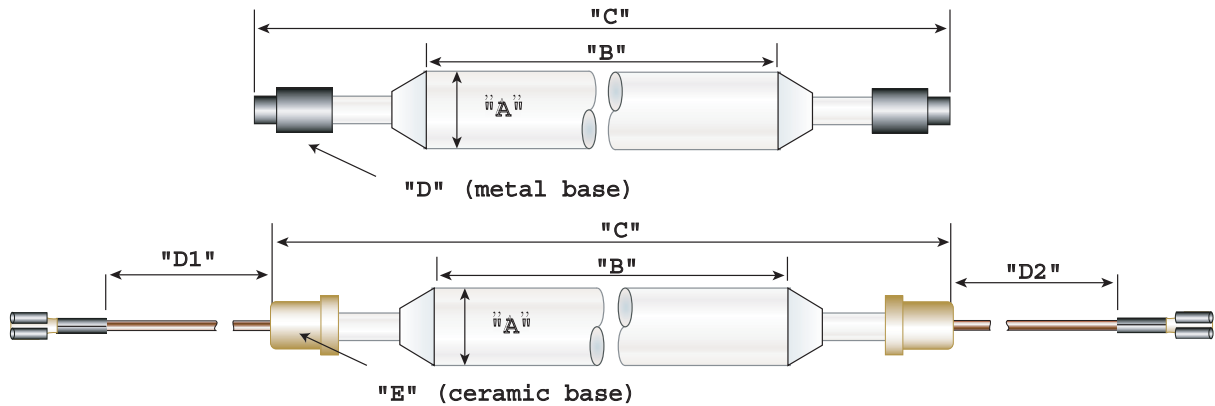


Need help designing a special MPUV lamp? Call LCD Lighting at 203-795-1520 or email us info@lcdl.com. If you know your specifications, we would be pleased to help design a lamp that fits for your application.



Lamp Voltage: _____ V ± 5% (Standard) – _____ V

Lamp Current: _____ A (nominal)

Total Wattage: _____ KW

Max Starting Voltage: _____ V

Outside Diameter (A): _____ mm

Arc Length (between coatings) (B): _____ mm

Overall Length (C): _____ mm

If Metal Base (D): _____ (please choose from page 2)

If Ceramic Base (E): _____ (please choose from page 2)

Wire Lengths (D1): _____ mm

Wire Lengths (D2): _____ mm

Lugs (F): _____ None- Bare wire

_____ Ring Lug, #8 screw

_____ Ring Lug, #10 screw

_____ Ring Lug, 1/4" screw

_____ Ring Lug, Metric M5 screw

_____ Spade Lug, #8 screw

_____ Spade Lug, #10 screw

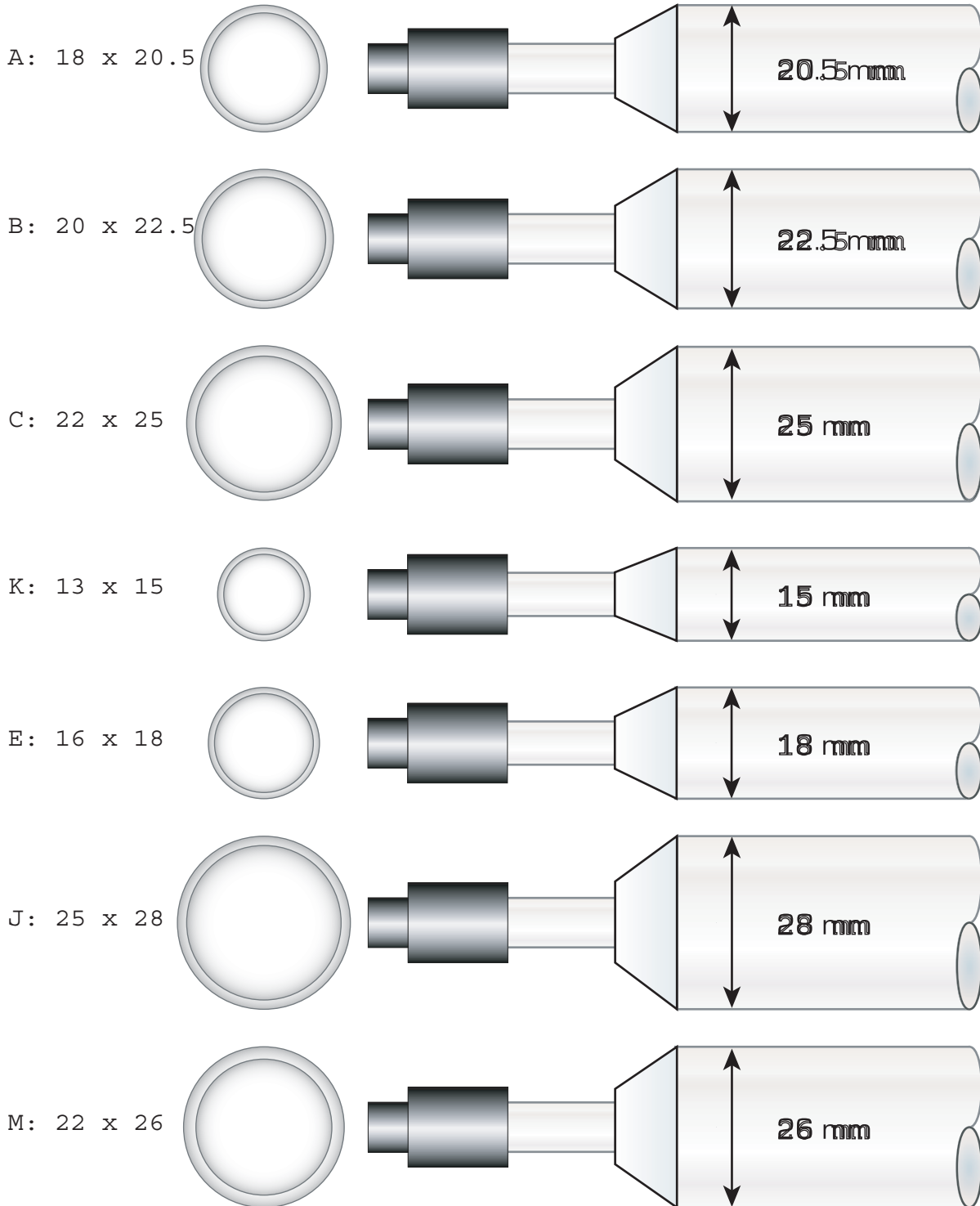
_____ Quick Disconnect, 1/4" female

_____ Wire Pin

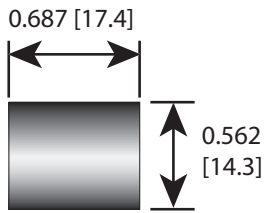
Other- specify: _____



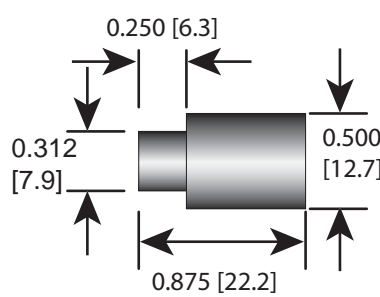
MPUV lamps are available from 100 watts per inch to over 700 watts per inch, and arc lengths of 2-85 inches and with a wide variety of base types and terminations.



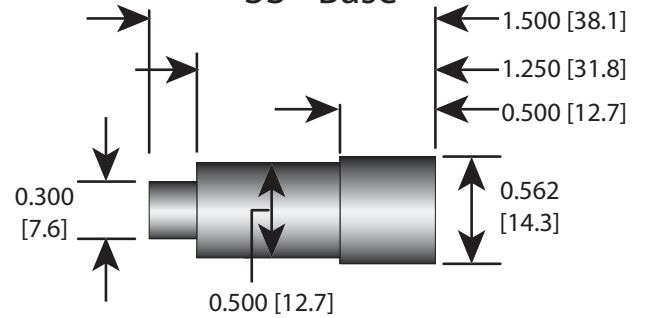
034S - Base



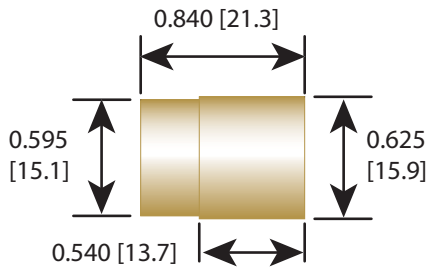
2S - Base



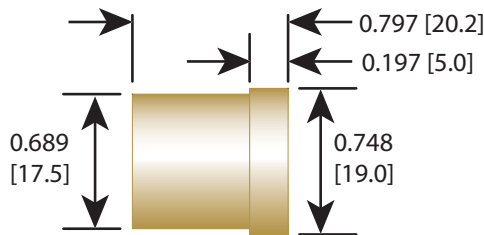
3S - Base



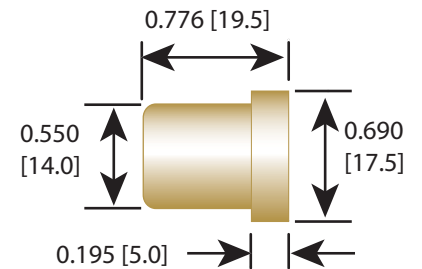
210C - Base



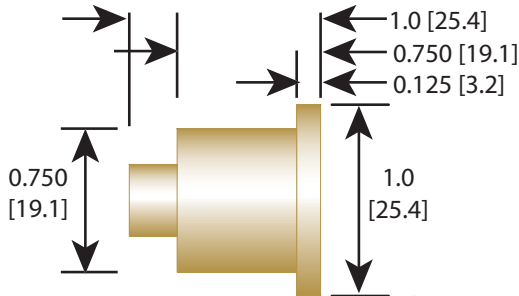
205C - Base



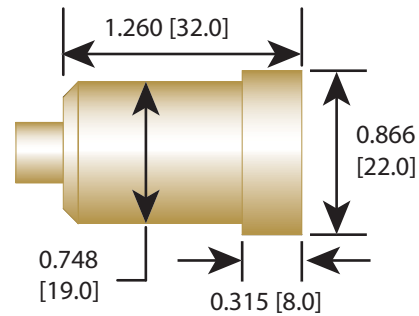
4C - Base
(side wire slotted base also available)



194C - Base

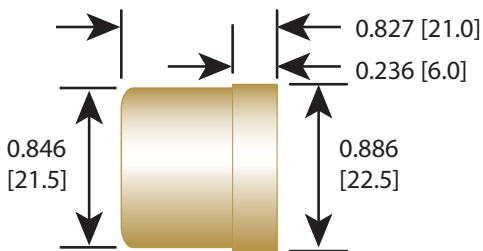


7C - Base

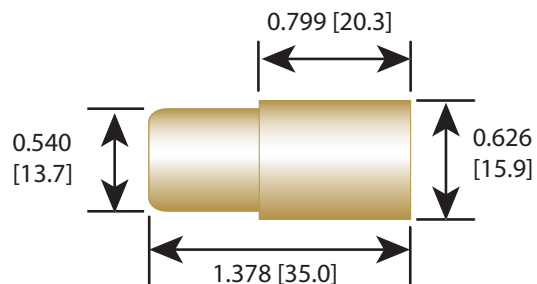


202C - Base

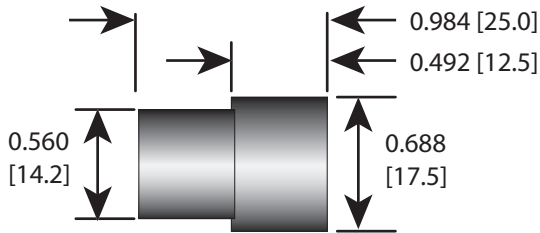
(side wire slotted base also available)



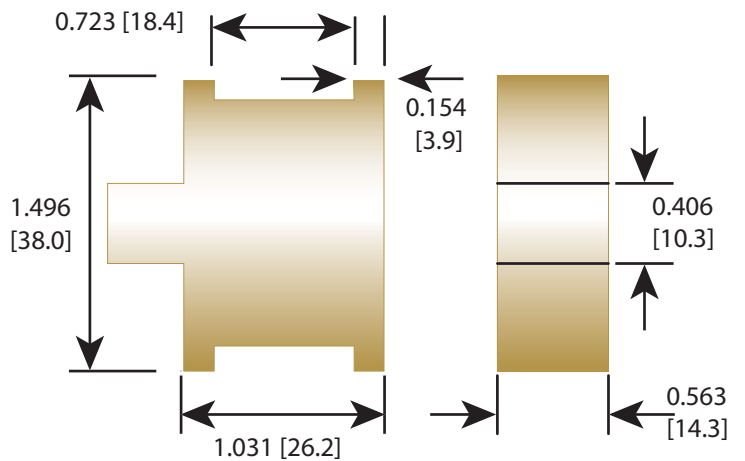
204C - Base



070S - Base

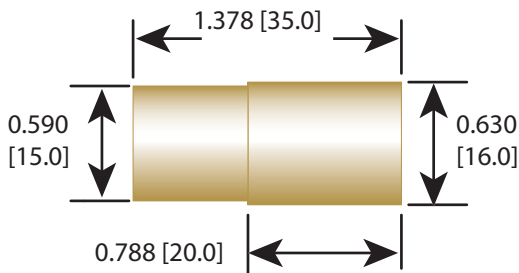


206C - Base



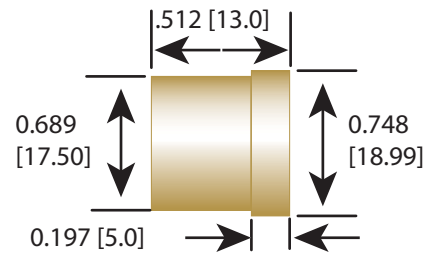
5C - Base

(side wire slotted base also available)

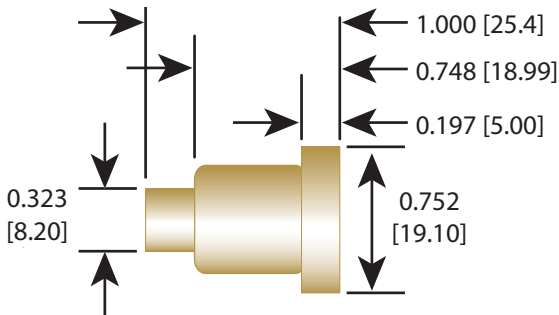


205C - Base

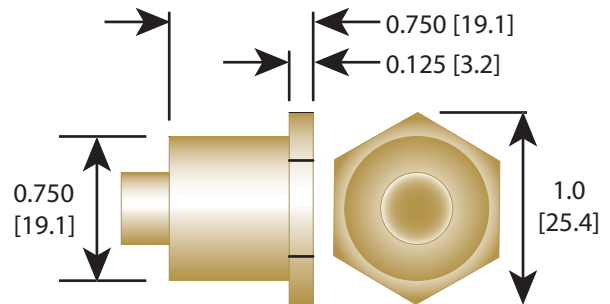
(side wire slotted base also available)



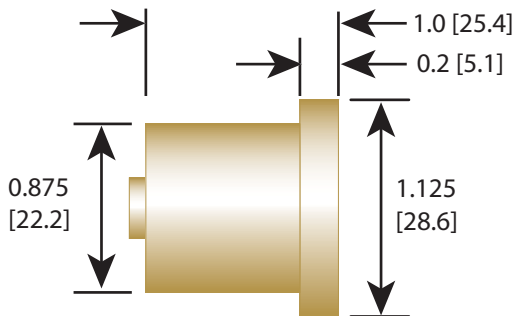
208C - Base



196C - Base



195C - Base



6C - Base

